

Service manual

Diamatic 335MC

*Service manual
Version 1.0*

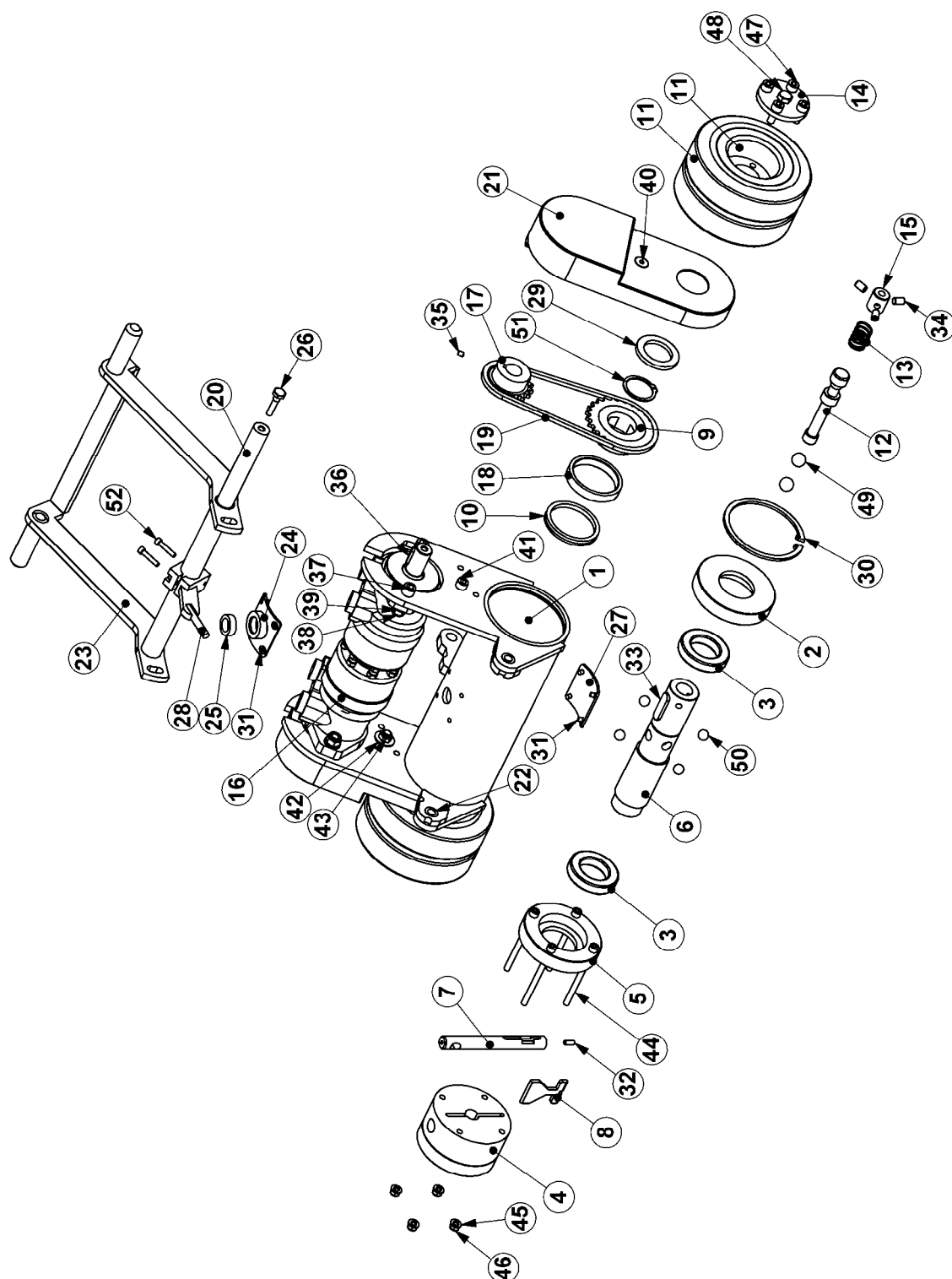


Diamatic
Utrechthaven 12
NL - 3433 PN NIEUWEGEIN
Tel: 0031 (0)30 223 8630
Fax: 0031 (0)30 223 8981
Info@diamatic.eu
The Netherlands

Table of contents

1. Spare parts	04
2. Electric schedules	
E06180 / 3x 400V / 50Hz	17
E06442 / 3x 480V UL / 60Hz	23

1. Spare parts Drive unit

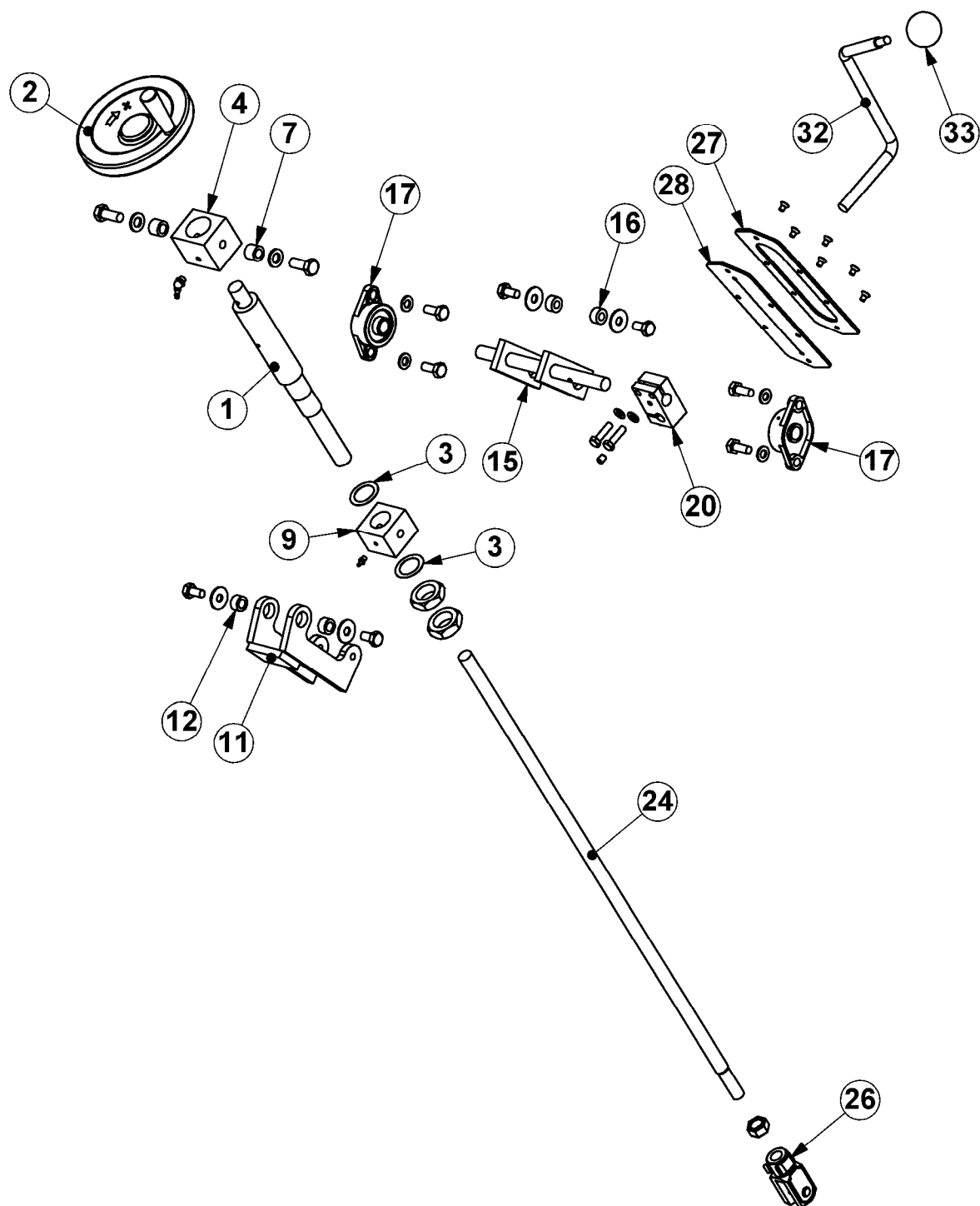


Drive unit

Item	Part number	Description	Remarks	Qty.
1	E03854	Drive bracket		1
2	E03863	Bearing house outer		2
3	E01477	Bearing		4
4	E03855	Clutch house		1
5	E03862	Bearing house inner		2
6	E03864	Wheel shaft		2
7	E03860	Shaft slide plate		1
8	E03861	Slide plate		1
9	E03936	Bottom sprocket		2
10	E03939	V-ring seal		2
11	E03935	Wheel complete		2
12	E03865	Coupling shaft		2
13	E03942	Spring		2
14	E03869	End plate		2
15	E03866	Spring retainer		2
16	350-4005-S	Hydraulic motor		2
17	E03945	Sprocket		2
18	E03937	Distance ring		2
19	E00237 (1.5M)+ E00238 + E00451	Chain complete		2
20	E03870	Hinge shaft		1
21	E03871	Chain guard		2
22	E03943	Bush		2
23	E03948	Treadle		1
24	E03946	Dust protection		1
25	E03947	Felt seal		1
26	E04035	Hinge bolt		2
27	E04034	Cover plate		1
28	E04037	Lever		1
29	E04462	Felt seal		2
30	BE0636	Circlip Ø120	DIN472	2
31	BE0453	M6x10 Countersunk head screw	DIN7991	8
32	BE0637	M6x16 hexagon socket set screw	DIN916	1
33	BE0638	14x9x50 Parallel key	DIN6885A	2
34	BE0194	M10x16 Hexagon socket screw	DIN933	6
35	BE0473	M6x8 hexagon socket head screw	DIN916	2
36	BE0256	30x8x7 Parallel key	DIN6885A	2
37	BE0199	M12x40 Hexagon socket head cap	DIN912	4

Item	Part number	Description	Remarks	Qty.
38	BE0073	M12 Lock nut	DIN985	4
39	BE0026	M12 Washer	DIN125A	4
40	BE0465	M10x40 Countersunk head screw	DIN7991	2
41	BE0195	M10x35 Hexagon socket head cap	DIN912	2
42	BE0029	M10 Washer Ø30	DIN9021	2
43	BE0023	M10 Lock nut	DIN985	2
44	BE0635	M8x110 Hexagon socket head cap	DIN912	4
45	BE0003	M8 Washer	DIN125A	4
46	BE0048	M8 Lock nut	DIN985	4
47	BE0443	M10x25 Hexagon socket head cap	DIN912	8
48	BE0024	M12x35 Bolt	DIN933	2
49	E03941	Ball Ø20	DIN4501	4
50	E03940	Ball Ø15	DIN4501	8
51	BE0124	Circlip Ø45	DIN471	2
52	BE0189	M6x30 Hexagon socket head cap	DIN912	2

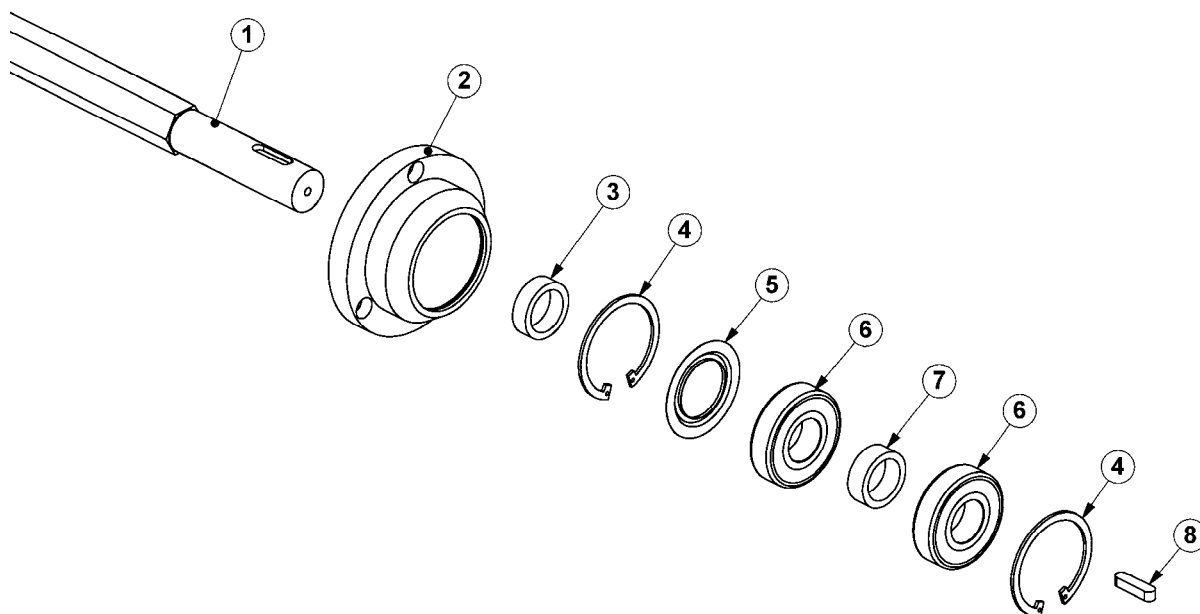
Lifting device



Lifting device

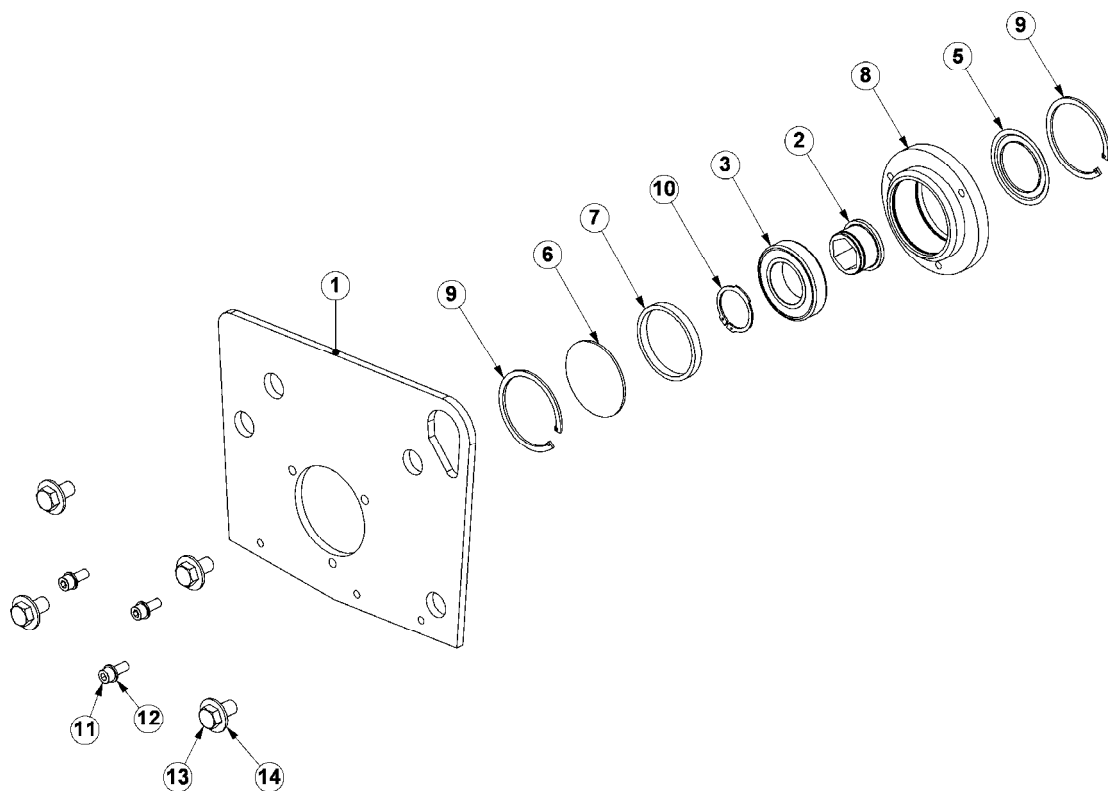
Item	Part number	Description	Remarks	Qty.
1	E03349	Spindle sleeve		1
2	E03353	Handwheel		1
3	E03352	Shim 40x28x0.5	DIN988	2
4	E03350	Upper bearing		1
7	E03326	Bush		2
9	E03351	Lower bearing		1
11	E03356	Knee lever		1
12	E03363	Bushing		2
15	E03358	Knee lever axle		1
16	E03362	Bushing		2
17	E03359	Bearing		2
20	E03360	Clamping piece		1
24	E03355	Spindle		1
26	BE0561	Fork joint	DIN71752	1
27	E03368	Gasket cover plate		1
28	E03367	Gasket		1
32	E03365_1	Lever		1
33	E03365_2	Knob lever		1

Bearing unit complete E03952



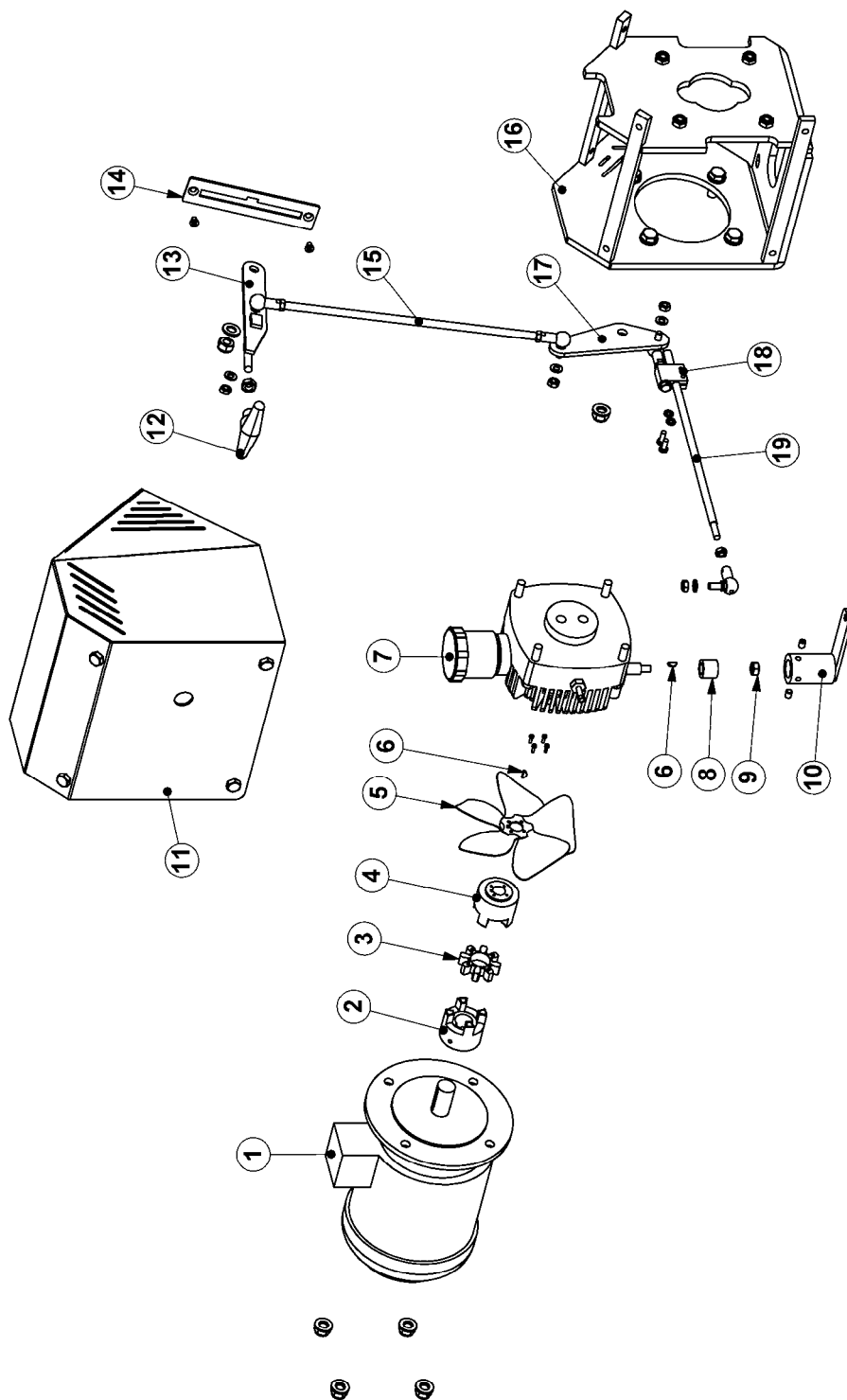
Item	Part number	Description	Remarks	Qty.
1	E04041	Hexagon drive shaft		1
2	E03313-1	Bearing house left		1
3	E04042	Distance ring		1
4	BE0107	Circlip Ø80	DIN472	2
5	E03312	Protection ring		1
6	E03991	Bearing		2
7	E03316	Distance bush		1
8	BE0252	Parallel key 10x8x40	DIN6885A	1
1 - 8	E03952	Bearing unit complete		1

Side plate & bearing unit



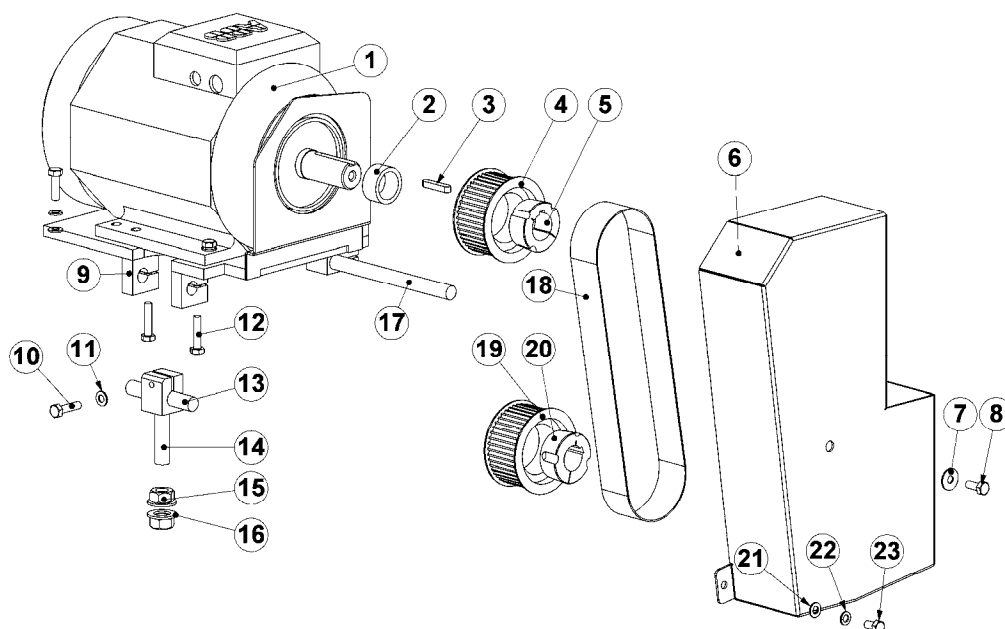
Item	Part number	Description	Remarks	Qty.
1	E06312	Side plate only		1
2	E03309	Hexagon driving support		1
3	E03992	Bearing		1
5	E03310	Protection ring		1
6	E03307	Cover disk		1
7	E03308	Distance ring		1
8	E03305	Bearing housing right		1
9	E03993	Circlip Ø90	DIN472	2
10	BE0126	Circlip Ø50	DIN471	1
11	BE0443	M10x25 Hexagon socket head cap	DIN912	3
12	BE0004	M10-Washer	DIN125A	3
13	BE0585	M16x30 Bolt	DIN933	4
14	BE0306	M16-Washer	DIN125A	4
2-10	E03953	Bearing unit complete		1

Hydraulic pump & drive control of BMC-335EHY



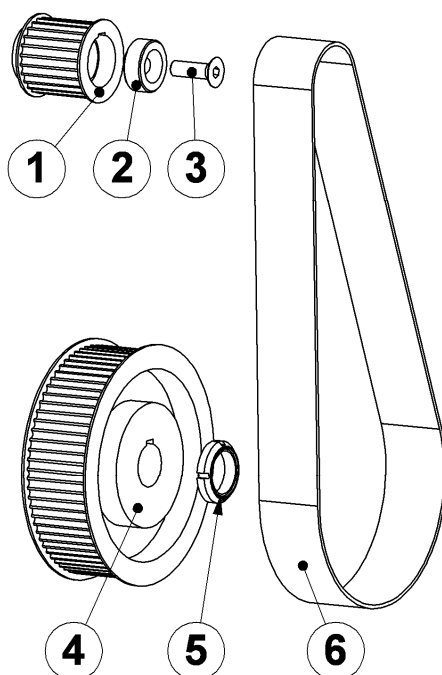
Item	Part number	Description	Remarks	Qty.
1	E04001	Pump motor		1
2	E04050	Coupling part 1		1
3	E04052	Coupling insert		1
4	E04051	Coupling part 2		1
5	E03378	Fan		1
6	E03996_8	1/8 x 1/2 Woodruff key		2
7	E03996_1	Hydraulic gearbox		1
8	E04008	Adapter		1
9	BE0639	Nut 3/8-16 UNC		1
10	E03379	Lever		1
11	E04004	Cover		1
12	E03387	T-grip		1
13	E03984	Lever		1
14	E03366	Lock-in plate		1
15	E03385	Threated end		1
16	E04002	Bracket hydropump		1
17	E03985	Lever plate		1
18	E03388	Clamping piece		1
19	E03983	Rod		1

Drive BMC-335EHY



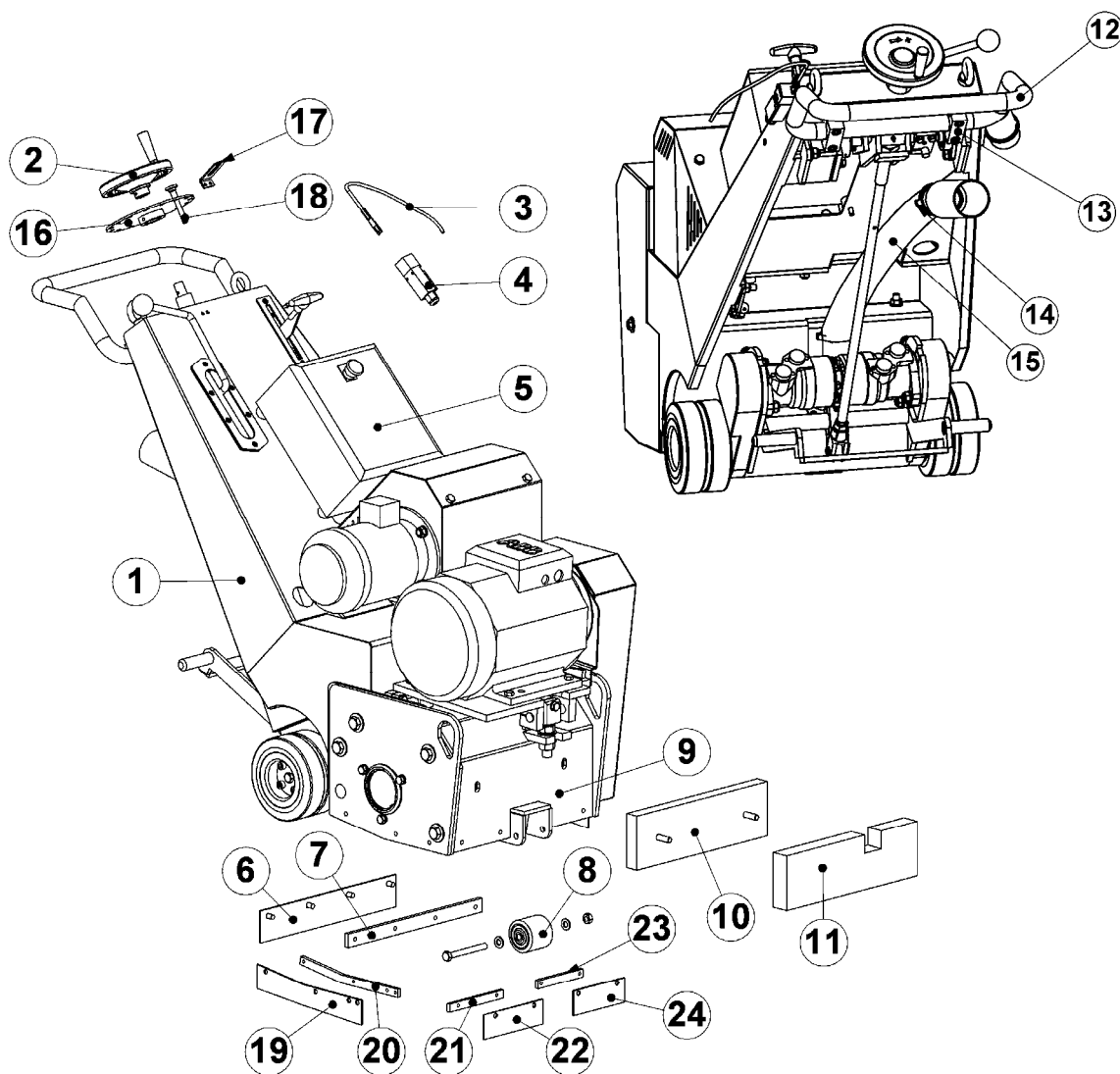
Item	Part number	Description	Remarks	Qty.
1	E04058	Motor 11 kW		1
2	E04014	Distance bush		1
3	BE0086	Parallel key 10x8x45	DIN6885A	1
4	E02036	Pulley		1
5	222-2171	Taperlock bush		1
6	E03998	Belt guard		1
7	BE0029	10 washer Ø30	DIN9021	1
8	BE0039	M10x25 hexagon bolt	DIN933	1
9	E03977	Motor base plate		1
10	BE0010	M10x40 hexagon bolt	DIN933	2
11	BE0004	M10 washer	DIN125A	1
12	BE0043	M10x45 hexagon bolt	DIN933	2
13	E03393	Bolt		1
14	E03392	Eye bolt		1
15	BE0283	M20 nut	DIN934	2
16	BE0096	M20 washer	DIN125A	2
17	E03978	Shaft motor base plate		1
18	E04697	Belt		1
19	E03636	Pulley		1
20	E04732	Taperlock bush		1
21	BE0004	M10 washer	DIN125A	1
22	BE0006	M10 spring washer	DIN127B	1
23	BE0365	M10x12 hexagon bolt	DIN933	1

Rebuild kit



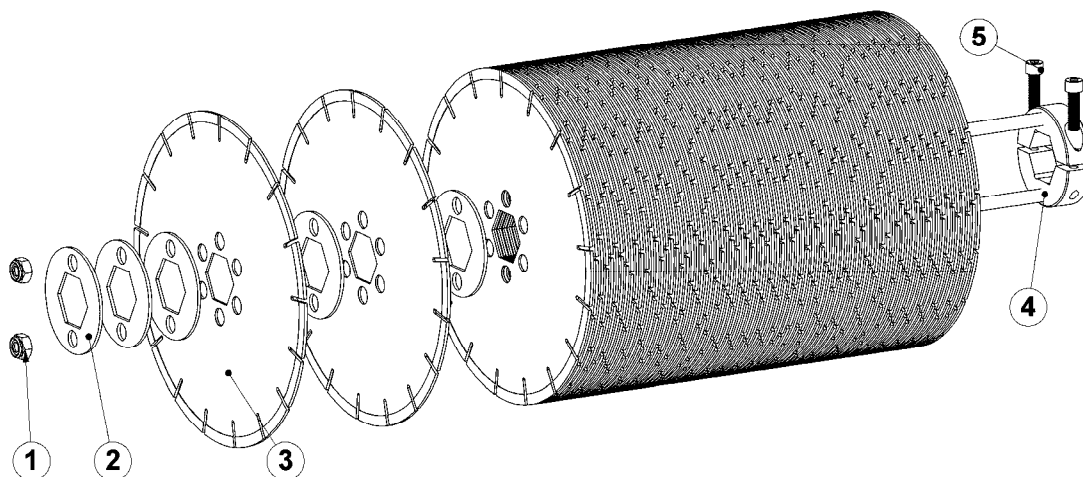
Item	Part number	Description	Remarks	Qty.
1	E03404	Pulley		1
2	E04013	Fixation bush		1
3	BE0626	M12x40 Countersunk head screw	DIN7991	1
4	E03406	Pulley		1
5	BE0087	M35 slotted nut		1
6	E04009	Belt		1
1-6	E06499	Rebuild kit		1

General parts for BMC-335EHY



Item	Part number	Description	Remarks	Qty.
1	E03974	Main body		1
2	E03353	Handwheel		1
3	BG11758	Cord for deadman switch		1
4	BG11760	Deadman switch		1
5	E06180	Electrical box 3x 400V / 50Hz		1
	E06442	Electrical box 3x 480V UL 60Hz		1
6	E03989	Rubber gasket		1
7	E03321	Clamping bar		1
8	E03317	Front wheel		1
9	E06319	Frame		1
10	E03412	Weight 1		1
11	E03413	Weight 2		1
12	E03382	Handle		1
13	E03381	Clamping piece		2
14	ST-73300	Hose clamp		2
15	E00561	Hose		0.7M
16	E06440	Adjustable depth control		1
17	E06441	Fork		1
18	E06445	Locking pin		1
19	E06333	Rubber gasket side		2
20	E06330	Clamping bar side		2
21	E06332	Clamping bar front		1
22	E06334	Rubber gasket front		1
23	E06331	Clamping bar front small		1
24	E06335	Rubber gasket front small		1

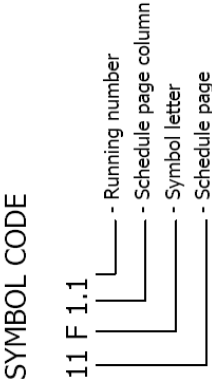
Sawing drum



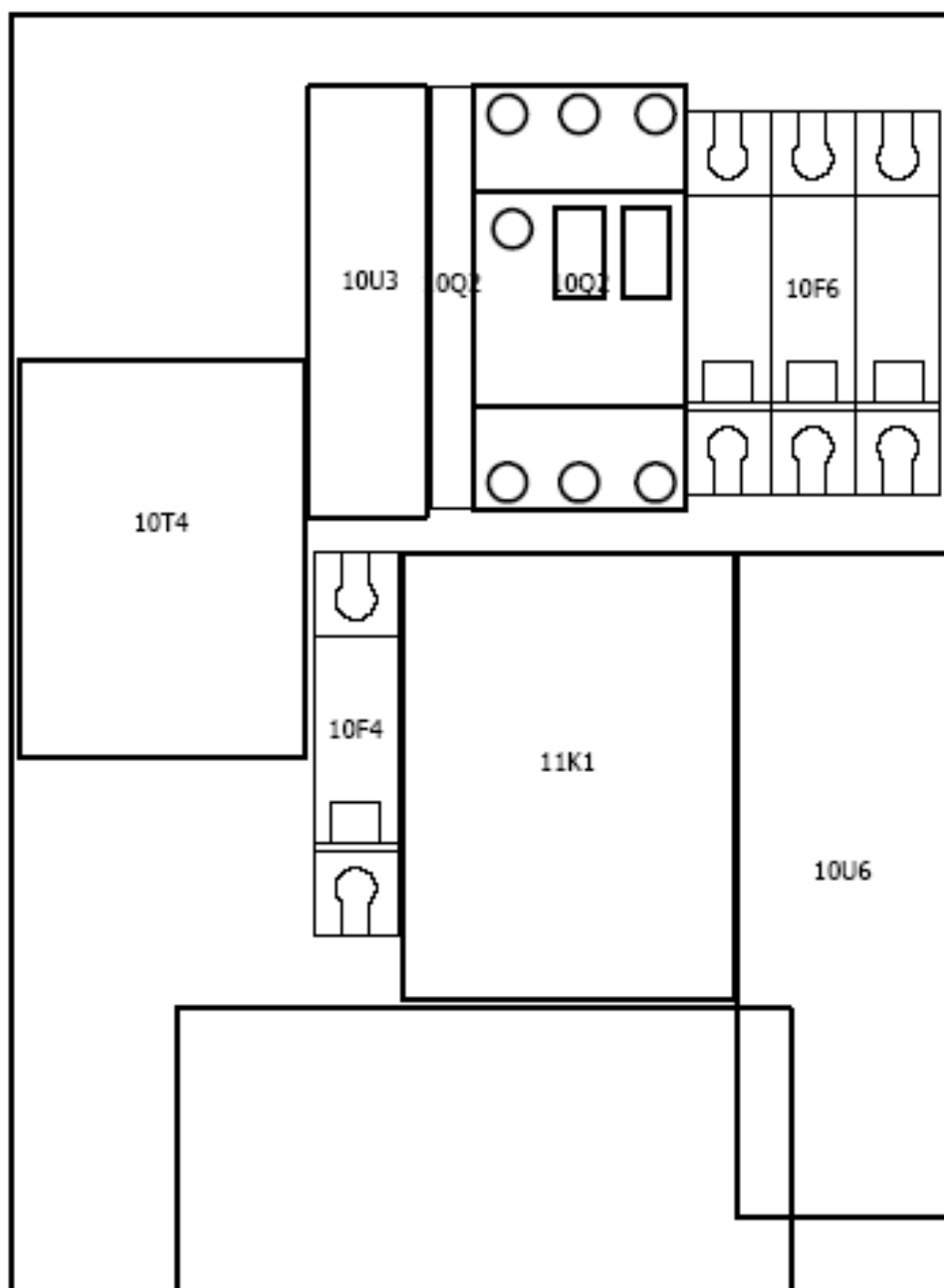
Item	Part number	Description	Remarks	Qty.
1	BE0023	M10 lock nut	DIN985	2
2	E06079	Spacer ring		85
3	E06320	Diamond blade green 30/40		80
	E06321	Diamond blade blue 30/40		80
4	E06078	Drum for diamond blades		1
5	BE0438	M8x30 hexagon socket head cap	DIN912	2

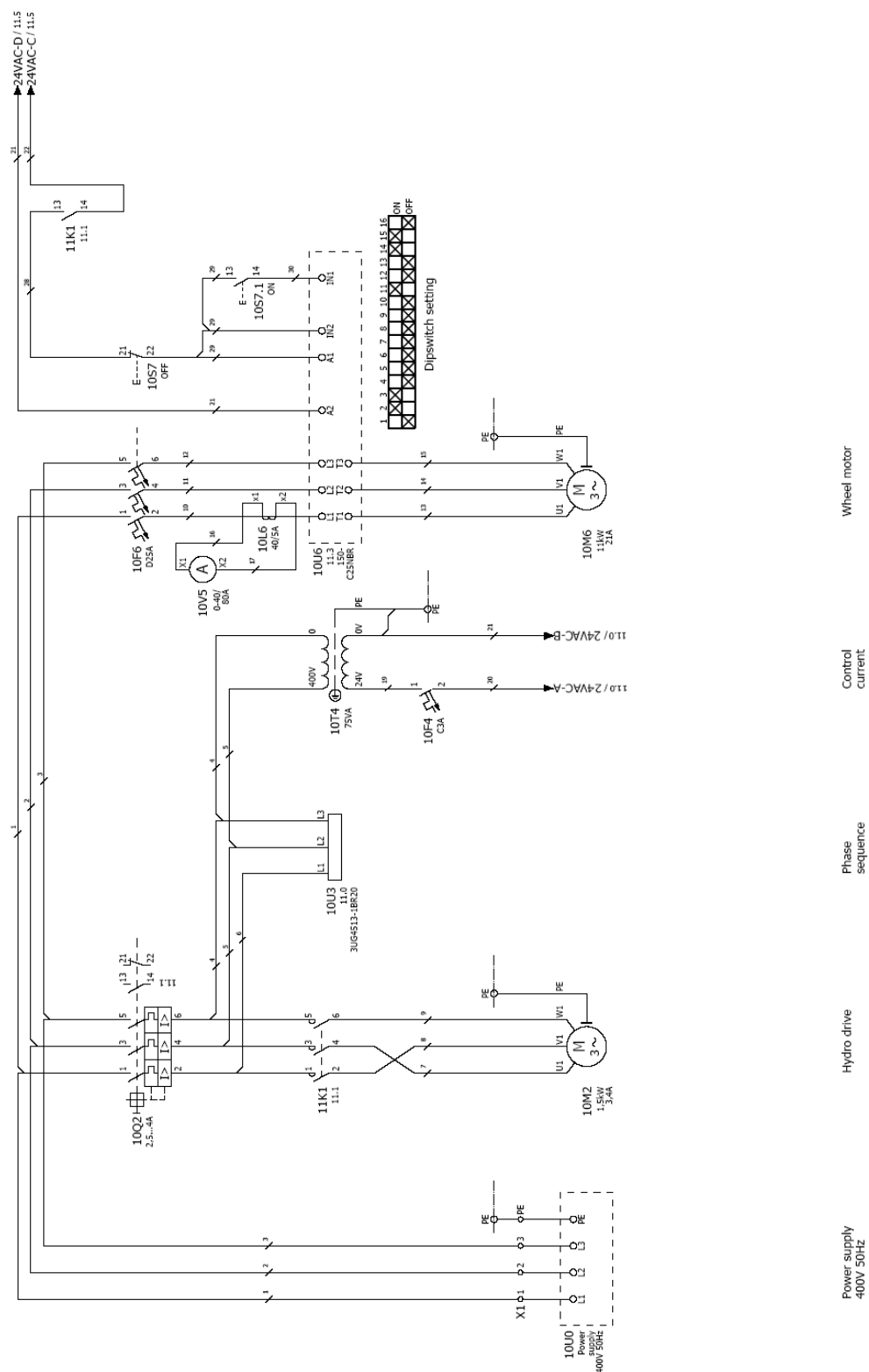
Width of sawing [mm]	Qty of blades	Qty of spacers
340	80	85
300	71	92
250	59	100
200	47	108
150	35	116
100	24	125
50	12	133

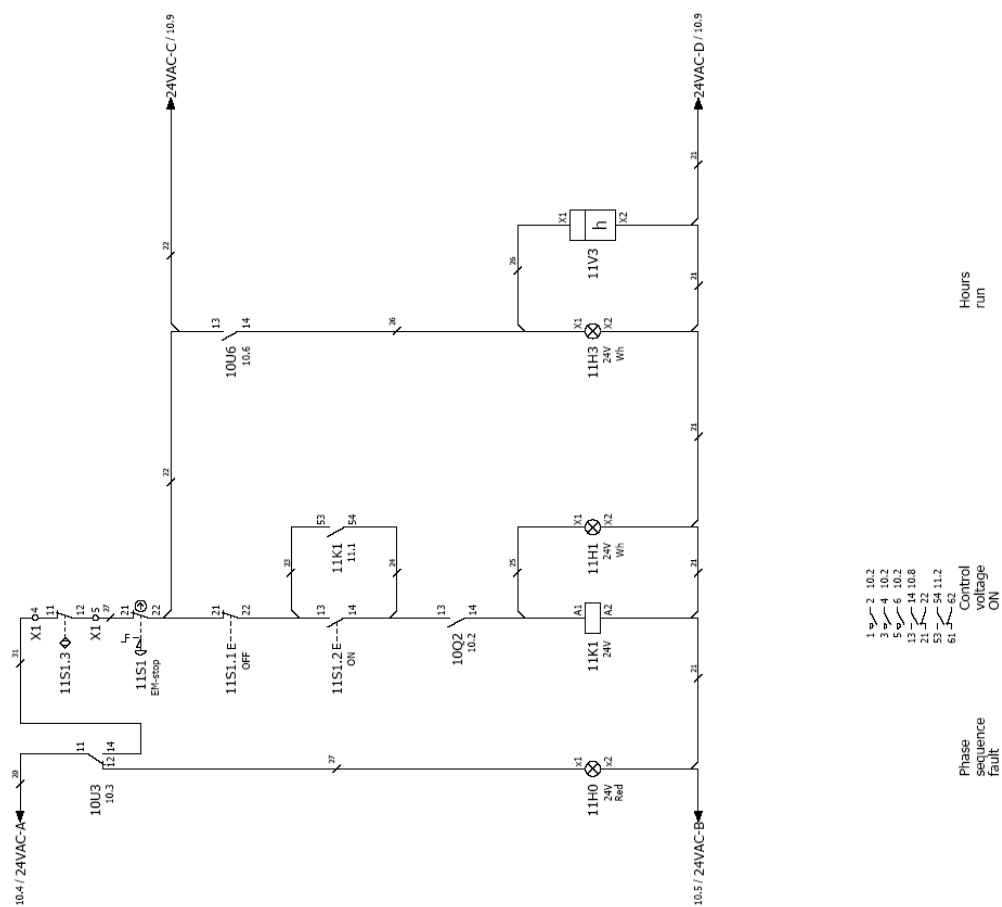
E06180 / 3x 400V / 50Hz



WIRE COLOR	
Main Voltage 400/230V	
Phase	Colors
L1	- Black
L2	- Black
L3	- Black
N	- Blue
Earth / PE	- Yellow/Green
Control Voltage - alternate voltage	
Phase (AC)	- Red
Neutral (AC)	- Red
Potential	- Orange



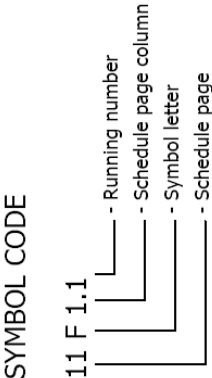




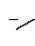
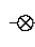
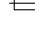
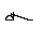

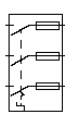





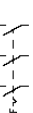

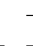







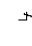

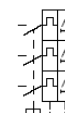



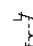



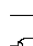
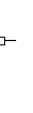


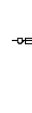





[illegible]

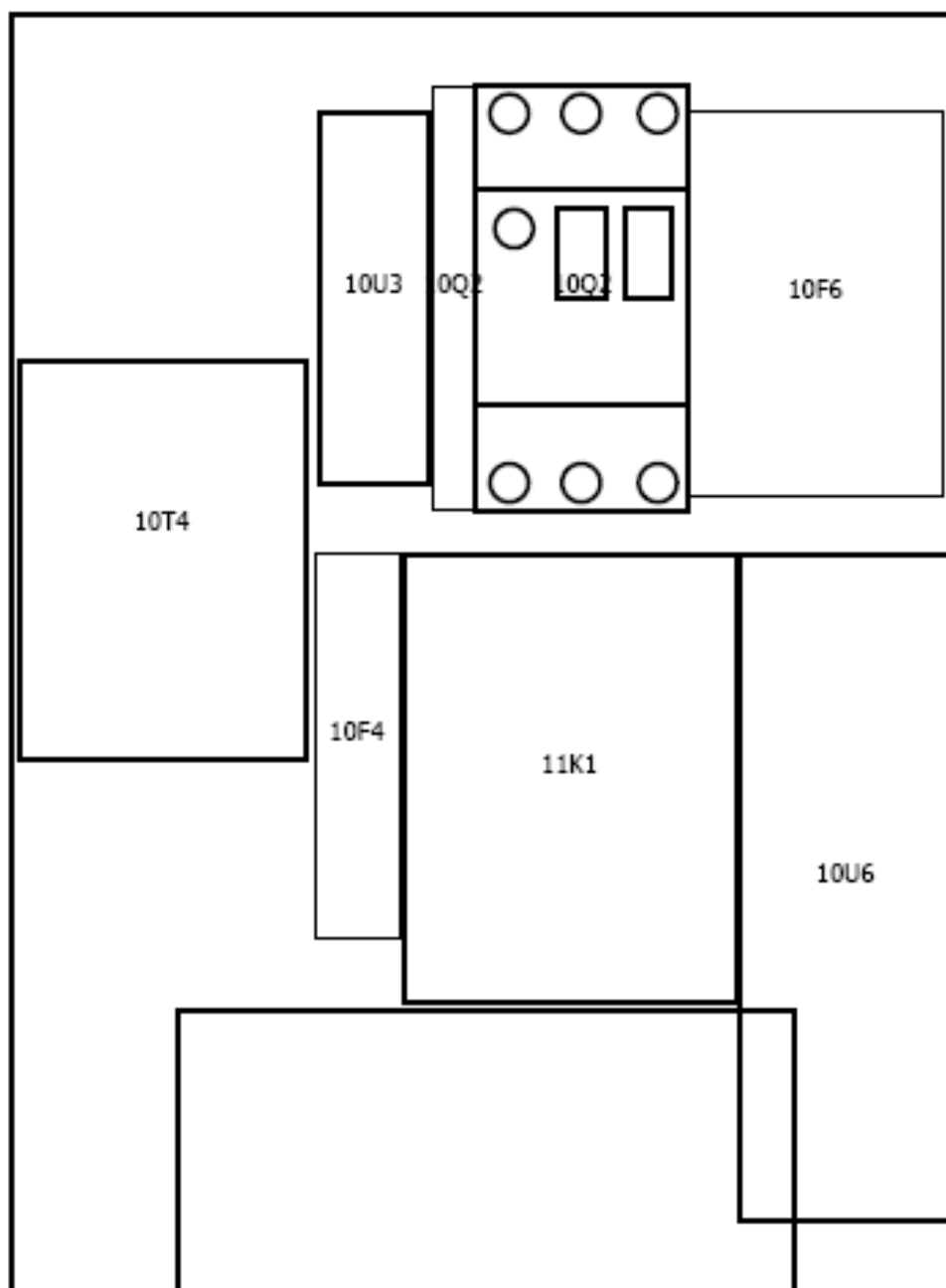
[illegible]

E06442 / 3x 480V UL / 60Hz



WIRE COLOR	
All wiring UL type	
Main Voltage 480/230V	
Phase	Colors
L1	- Black
L2	- Black
L3	- Black
N	- Blue
Earth / PE	- Yellow/Green
Control Voltage - alternate voltage	
Phase (AC)	- White
Neutral (AC)	- White
Potential	- Orange

	auxiliary contact	hulpcontact		signal light	signaallamp		Safety fuse	smeltveiligheid
	Power contact	vermogenscontact		horn	hoorn		Fused switch, three-pole	schakelbare scheider
	NO contact, opens with time delay	maakcontact, vertraagd open		amp.meter	ampèremeter		Fused disconnect, three-pole	scheider "klopak"
	NO contact, closes with time delay	maakcontact, vertraagd sluitend		running hour counter	urenreeller		Main switch	hoofdschakelaar
	NC contact, opens with time delay	verbreukcontact, vertraagd open		transformer	transformator		Circuit breaker, single-pole	installatieautomaat 1-polig
	NC contact, closes with time delay	verbreukcontact, vertraagd sluitend		Contactor coil relay coil	spoel		Circuit breaker, two-pole	installatieautomaat 2-polig
	Pushbutton rebound	drukknop terugveerd		Contactor/relay coil, with pick-up delay	spoel met opkomvertraging		Circuit breaker, three-pole	installatieautomaat 3-polig
	Pushbutton locking	drukknop blijvend		Contactor/relay coil, with drop-out delay	spoel met afvalvertraging		Power circuit breaker motor overload switch with switch mechanism	motor beveiligingsschakelaar
	Rotary switch rebound	top draaischakelaar		Contactor pulse coil relay pulse coil,	spoel puls		Valve	elektrisch bediende klep
	Rotary switch locking	draaischakelaar		Tube light	TL verlichting		Resistor with movable contact	regelbare weerstand
	Emergency stop rotary unlock	noodstop met draibare vrijgave		Resistor / Heating	weersand verwarming		Terminal	rijgklem
	Thermostatic switch	thermostaat hygrostaat		Socket	wandcontactdoos		Terminal with fuse	rijgklem met zekering
	Pressure switch	druckschakelaar		Current transformer	stroombijzetter		Rectifier	geleijder
	Limit switch	endschakelaar						
	Proximity switch	naderingsschakelaar						





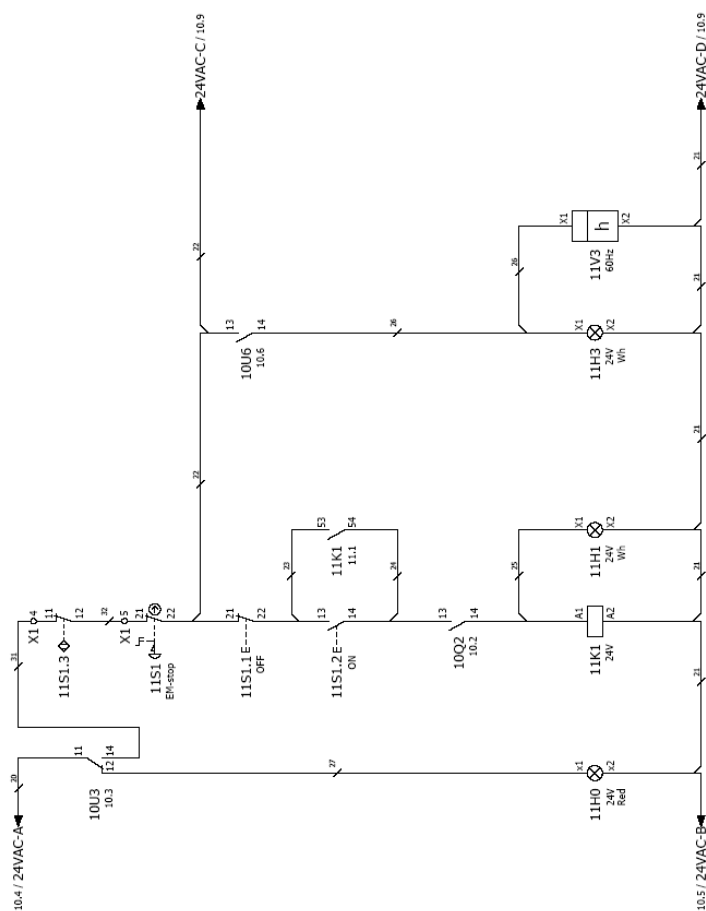
Wheel motor

Control
current

Phase sequence

Hydro drive

Power supply
480V 60Hz



NOTE:
All wiring UL type

[illegible]

[illegible]